

CARO1 SRL



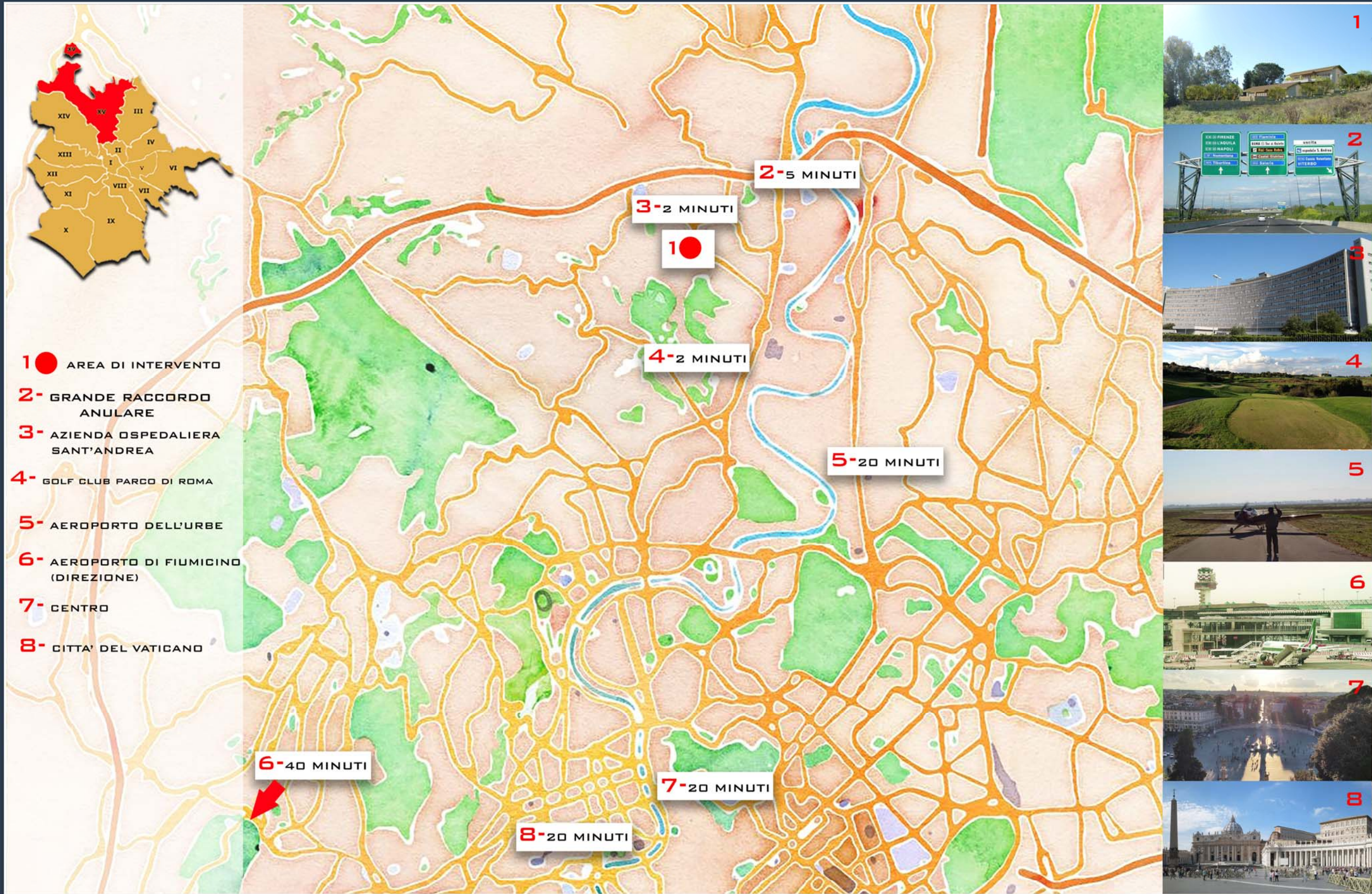
COMUNE DI ROMA - LOCALITA' GROTTAROSSA

COMPLESSO RESIDENZIALE "EXECUTIVE GOLF SUITE"



ADYTON

ARCHITECTURE  
&  
ENGINEERING



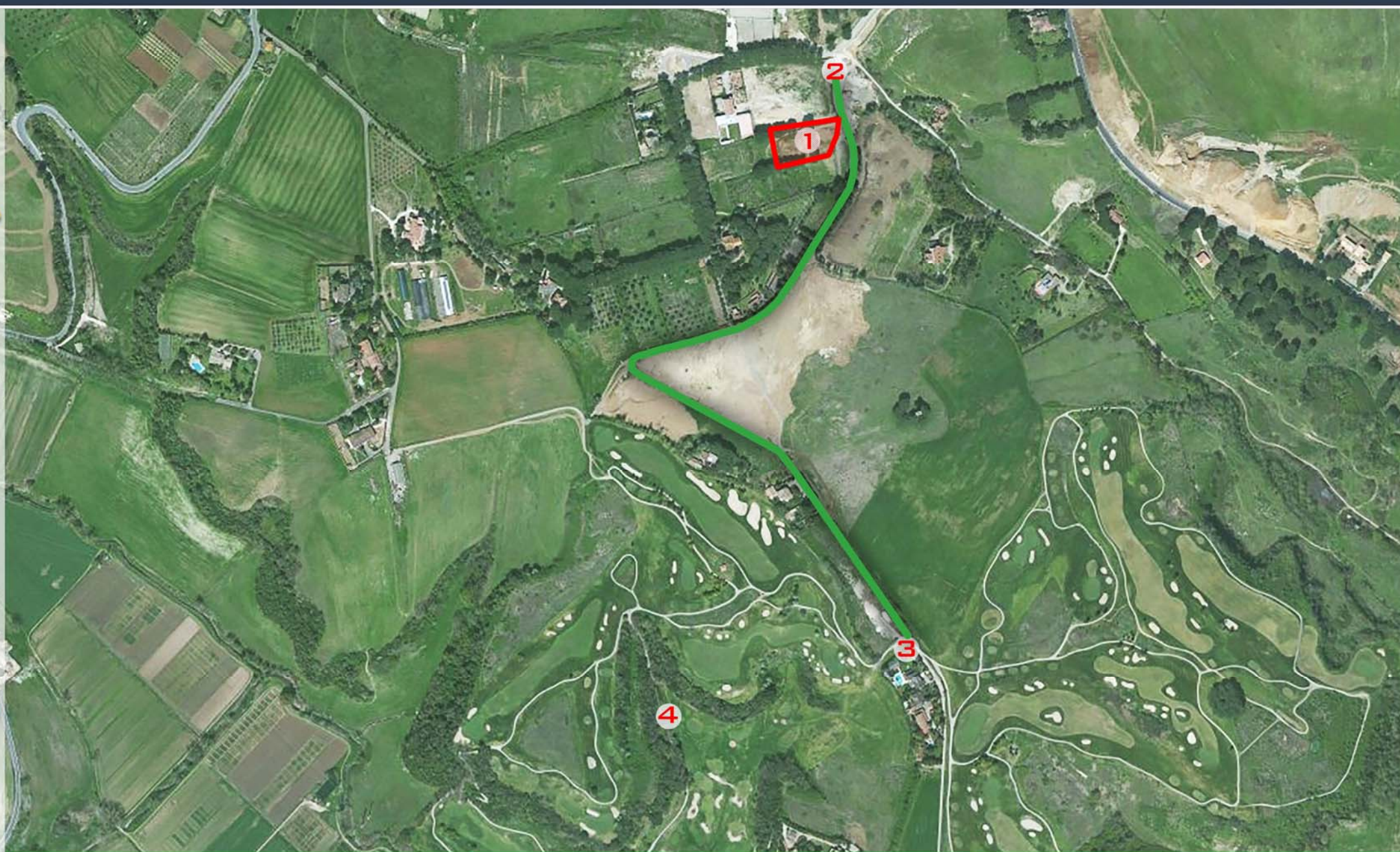
# INQUADRAMENTO TERRITORIALE

COMPLESSO RESIDENZIALE "EXECUTIVE GOLF SUITE"



ADYTON

ARCHITECTURE  
&  
ENGINEERING



## LOCALIZZAZIONE LOTTO

COMPLESSO RESIDENZIALE "EXECUTIVE GOLF SUITE"

ADYTON

ARCHITECTURE  
&  
ENGINEERING



# PLANIMETRIA GENERALE

COMPLESSO RESIDENZIALE "EXECUTIVE GOLF SUITE"



-  -VIDEO SORVEGLIANZA
-  - ALLARME PERIMETRALE
-  -AVVOLGIBILI COASSIALI
-  - VIDEOCITOFONO E WI-FI
-  - PANNELLI FOTOVOLTAICI PER IL RISPARMIO ENERGETICO
- INFISSI A TAGLIO TERMICO
-  - SOFFITTO RADIANTE CON CONTROLLO REMOTO PER OGNI SINGOLO AMBIENTE
-  - PISCINA CONDOMINIALE
-  - AREA CONDOMINIALE PER LA RACCOLTA DIFFERENZIATA
-  - SPAZIO CONDOMINIALE PER LE BICICLETTE
- SISTEMA DI RACCOLTA DELLE ACQUE METEORICHE PER L'IRRIGAZIONE DEGLI SPAZI VERDI



**DOTAZIONI DEL COMPLESSO E DELLE SINGOLE UNITÀ**  
**COMPLESSO RESIDENZIALE "EXECUTIVE GOLF SUITE"**



PIANO INTERRATO

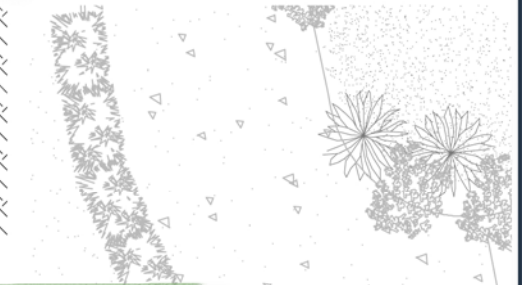


APPARTAMENTO	MQ	55.00
GIARDINO	MQ	146.00
BOX	MQ	30.00
CANTINA	MQ	49.00

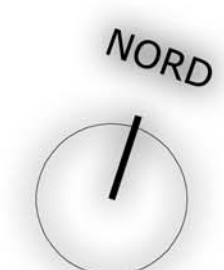
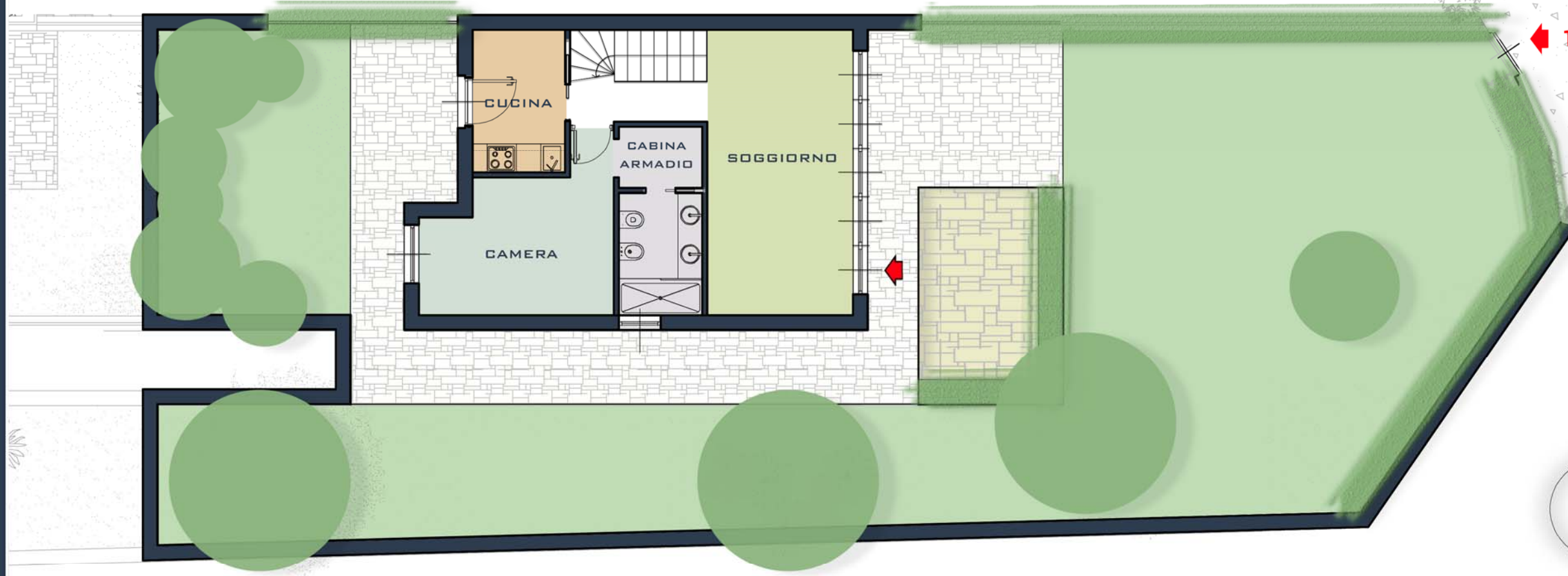
BLOCCO A



KEY PLAN



PIANO TERRA



PLANIMETRIA SUITE 1- JACK NICKLAUS

COMPLESSO RESIDENZIALE "EXECUTIVE GOLF SUITE"

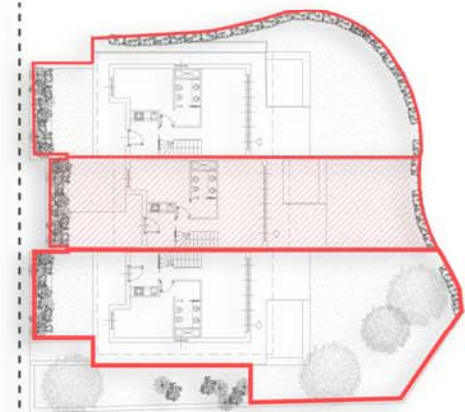


PIANO INTERRATO

APPARTAMENTO MQ 55.00  
GIARDINO MQ 100.00  
BOX MQ 30.00  
CANTINA MQ 53.00

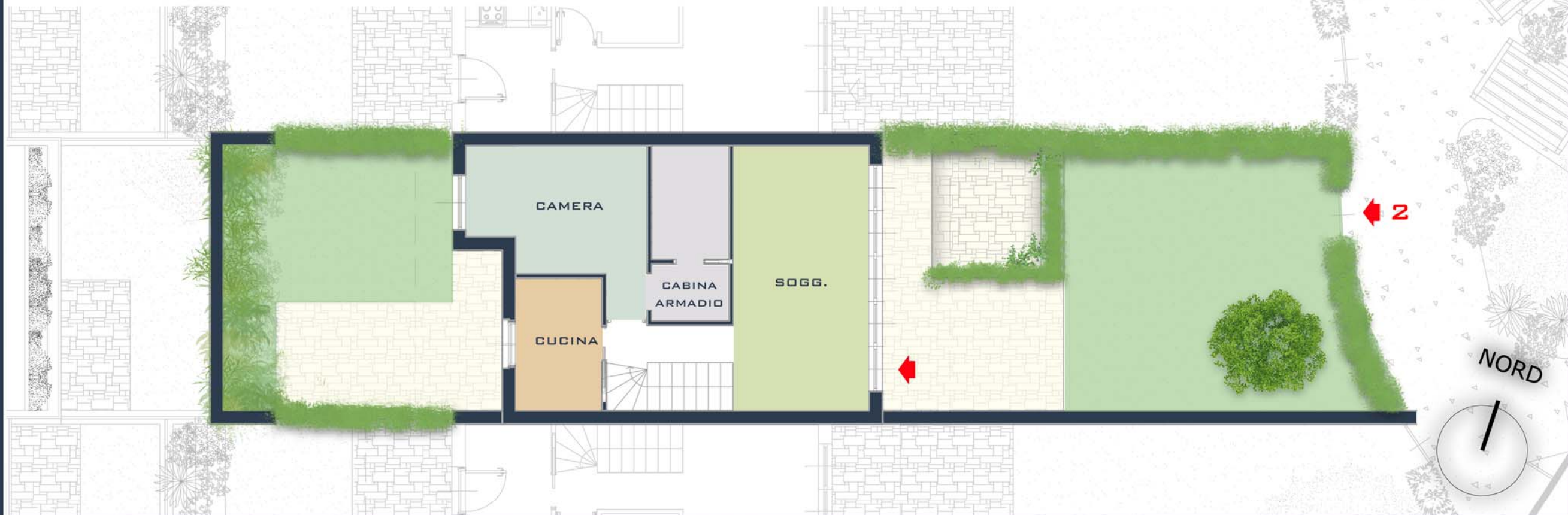


BLOCCO A



KEY PLAN

PIANO TERRA



PLANIMETRIA SUITE 2 - ARNOLD PALMER

COMPLESSO RESIDENZIALE "EXECUTIVE GOLF SUITE"



ADYTON

ARCHITECTURE  
&  
ENGINEERING

PIANO INTERRATO

APPARTAMENTO MQ 55.00  
GIARDINO MQ 180.00  
BOX MQ 30.00  
CANTINA MQ 47.00



BLOCCO A



KEY PLAN

PIANO TERRA



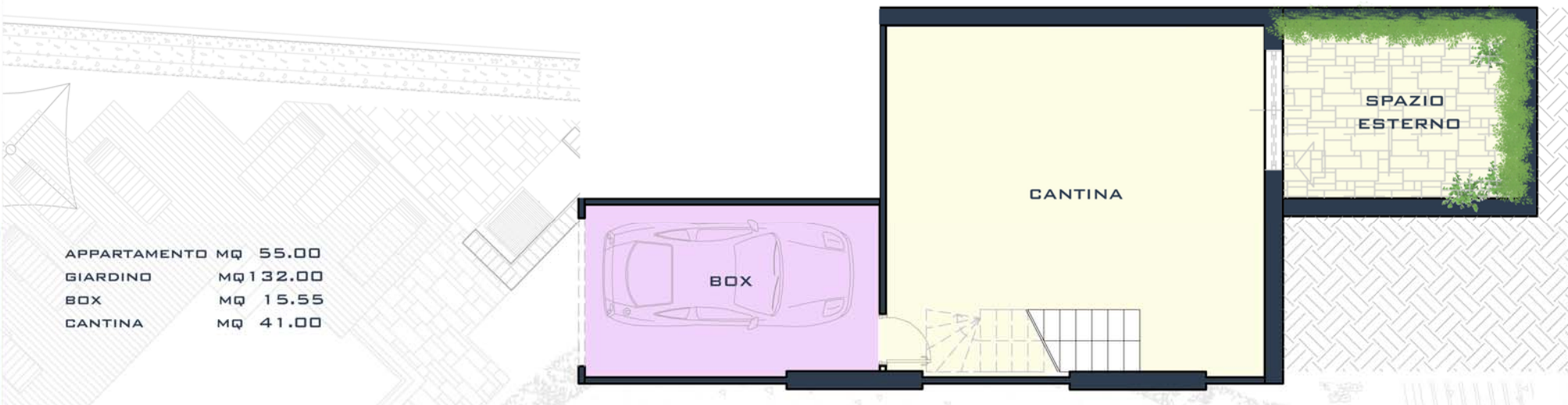
PLANIMETRIA SUITE 3 - GARY PLAYER

COMPLESSO RESIDENZIALE "EXECUTIVE GOLF SUITE"



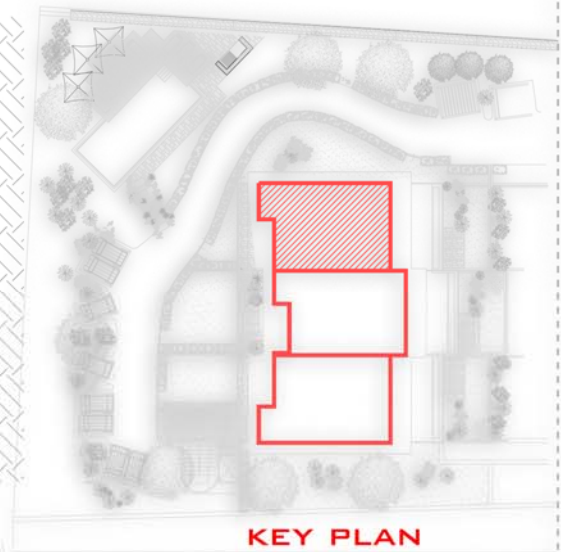


PIANO INTERRATO



APPARTAMENTO	MQ	55.00
GIARDINO	MQ	132.00
BOX	MQ	15.55
CANTINA	MQ	41.00

BLOCCO B

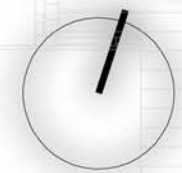


KEY PLAN

PIANO TERRA



NORD



PLANIMETRIA SUITE 4 - TIGER WOODS

COMPLESSO RESIDENZIALE "EXECUTIVE GOLF SUITE"



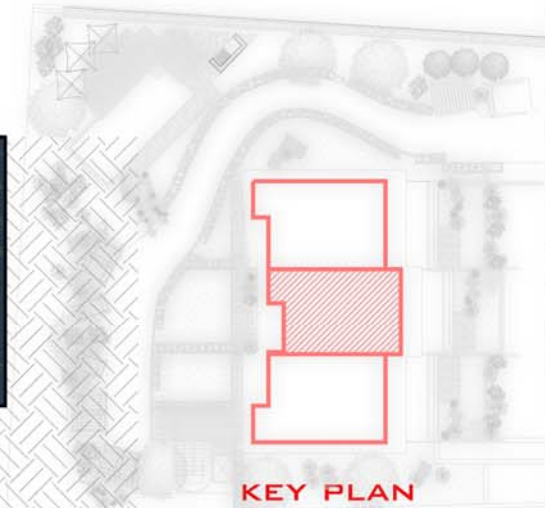
ADYTON

ARCHITECTURE  
&  
ENGINEERING

PIANO INTERRATO

BLOCCO B

APPARTAMENTO MQ 55.00  
GIARDINO MQ 96.00  
BOX MQ 15.60  
CANTINA MQ 48.40

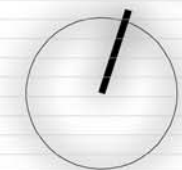


PIANO TERRA

5



NORD



PLANIMETRIA SUITE 5 - PHIL MICHELSON

COMPLESSO RESIDENZIALE "EXECUTIVE GOLF SUITE"



ADYTON

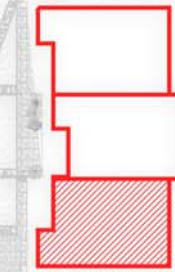
ARCHITECTURE  
&  
ENGINEERING

PIANO INTERRATO

APPARTAMENTO MQ 55.00  
GIARDINO MQ 160.00  
BOX MQ 15.40  
CANTINA MQ 41.00



BLOCCO B



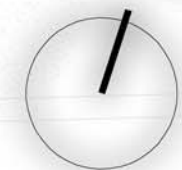
KEY PLAN

PIANO TERRA

6



NORD



PLANIMETRIA SUITE 6 - RORY MCILROY

COMPLESSO RESIDENZIALE "EXECUTIVE GOLF SUITE"



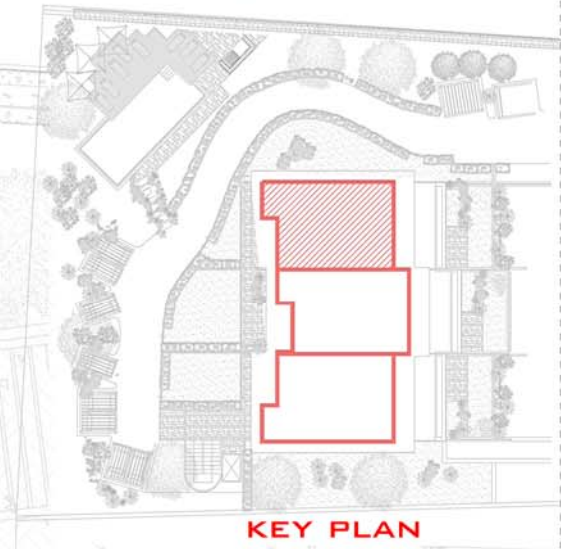
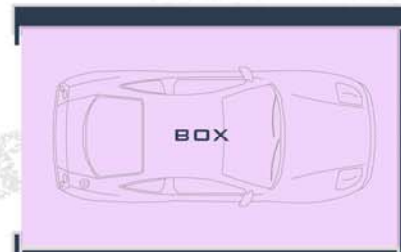
ADYTON

ARCHITECTURE  
&  
ENGINEERING

PIANO INTERRATO

BLOCCO B

APPARTAMENTO MQ 55.00  
TERRAZZO MQ 38.50  
BOX MQ 16.50

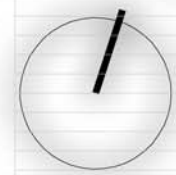


KEY PLAN

PIANO PRIMO



NORD



PLANIMETRIA SUITE 7 - SEVERIANO BALLESTEROS

COMPLESSO RESIDENZIALE "EXECUTIVE GOLF SUITE"

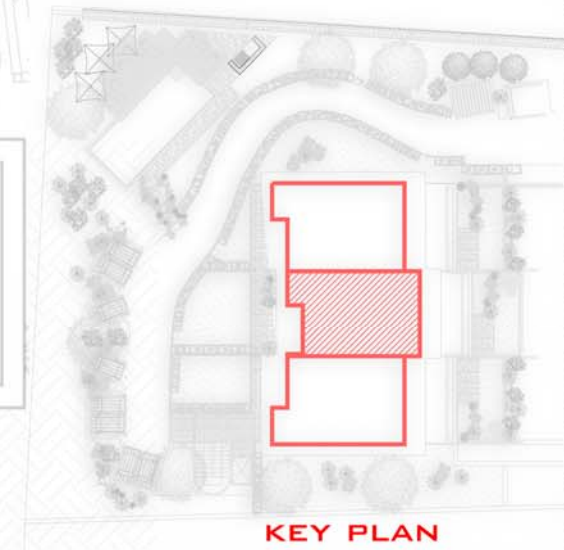
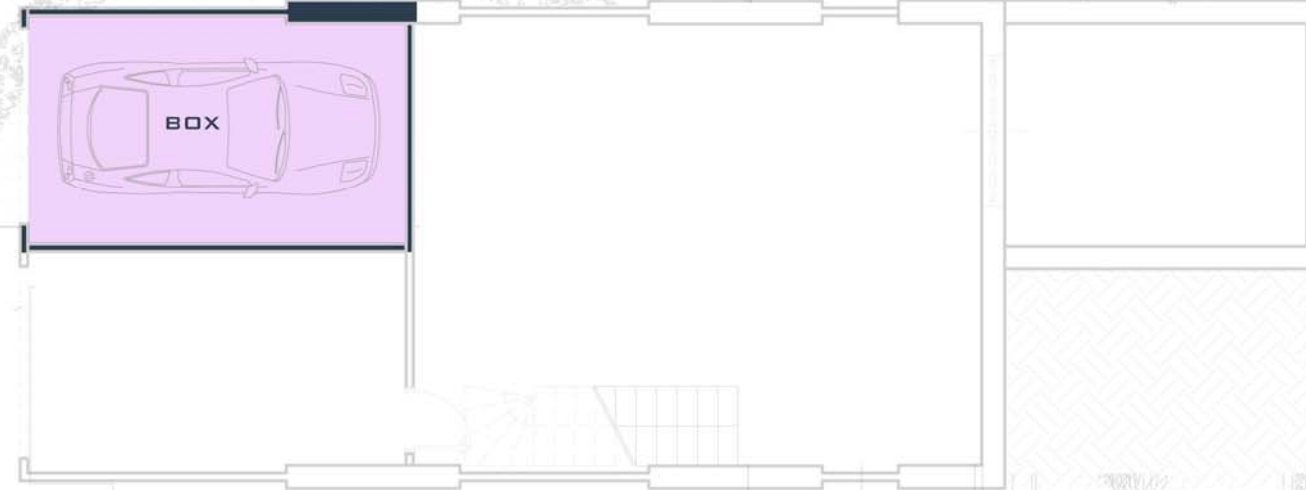


ADYTON

ARCHITECTURE  
&  
ENGINEERING

PIANO INTERRATO

BLOCCO B



KEY PLAN

PIANO PRIMO

APPARTAMENTO MQ 55.00  
TERRAZZO MQ 35.00  
BOX MQ 16.00



NORD



PLANIMETRIA SUITE 8 - GREG NORMAN

COMPLESSO RESIDENZIALE "EXECUTIVE GOLF SUITE"

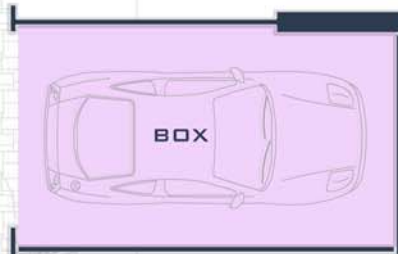


ADYTON

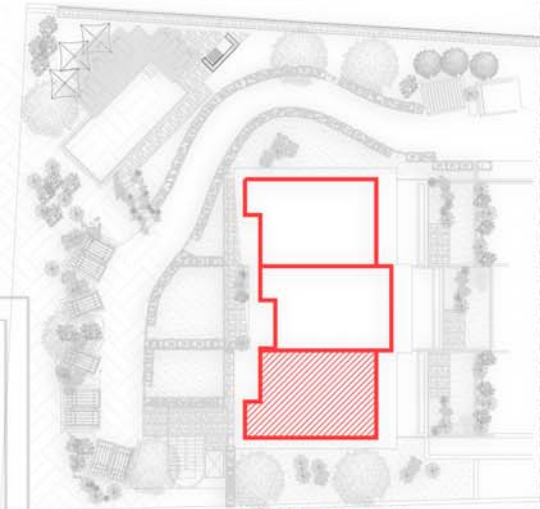
ARCHITECTURE  
&  
ENGINEERING

PIANO INTERRATO

APPARTAMENTO MQ 55.00  
TERRAZZO MQ 31.50  
BOX MQ 15.50

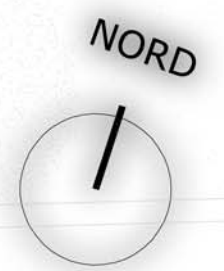


BLOCCO B



KEY PLAN

PIANO PRIMO



PLANIMETRIA SUITE 9 - BOBBY JONES

COMPLESSO RESIDENZIALE "EXECUTIVE GOLF SUITE"



## VISTA PROSPETTICA

COMPLESSO RESIDENZIALE "EXECUTIVE GOLF SUITE"



ADYTON

ARCHITECTURE  
&  
ENGINEERING



VISTA ESTERNA

COMPLESSO RESIDENZIALE "EXECUTIVE GOLF SUITE"



ADYTON

ARCHITECTURE  
&  
ENGINEERING





## VISTA DALL'ALTO SUITE TIPO

COMPLESSO RESIDENZIALE "EXECUTIVE GOLF SUITE"



ADYTON

ARCHITECTURE  
&  
ENGINEERING



## VISTA GIARDINO

COMPLESSO RESIDENZIALE "EXECUTIVE GOLF SUITE"



ADYTON

ARCHITECTURE  
&  
ENGINEERING



## VISTA SOGGIORNO

COMPLESSO RESIDENZIALE "EXECUTIVE GOLF SUITE"



ADYTON

ARCHITECTURE  
&  
ENGINEERING



## VISTA SOGGIORNO - PRANZO

COMPLESSO RESIDENZIALE "EXECUTIVE GOLF SUITE"



ADYTON

ARCHITECTURE  
&  
ENGINEERING



## VISTA CUCINA 1

COMPLESSO RESIDENZIALE "EXECUTIVE GOLF SUITE"



ADYTON

ARCHITECTURE  
&  
ENGINEERING



## VISTA CUCINA 2

COMPLESSO RESIDENZIALE "EXECUTIVE GOLF SUITE"



ADYTON

ARCHITECTURE  
&  
ENGINEERING



## VISTA CAMERA 1

COMPLESSO RESIDENZIALE "EXECUTIVE GOLF SUITE"



ADYTON

ARCHITECTURE  
&  
ENGINEERING



## VISTA CAMERA 2

COMPLESSO RESIDENZIALE "EXECUTIVE GOLF SUITE"



ADYTON

ARCHITECTURE  
&  
ENGINEERING





## VISTA BAGNO

COMPLESSO RESIDENZIALE "EXECUTIVE GOLF SUITE"



ADYTON

ARCHITECTURE  
&  
ENGINEERING



## VISTA PISCINA

COMPLESSO RESIDENZIALE "EXECUTIVE GOLF SUITE"



ADYTON

ARCHITECTURE  
&  
ENGINEERING



## VISTA PISCINA

COMPLESSO RESIDENZIALE "EXECUTIVE GOLF SUITE"



ADYTON

ARCHITECTURE  
&  
ENGINEERING



CARO 1 SRL

ADYTON - STUDIO ASSOCIATO ARCHITETTURA E INGEGNERIA  
VIALE CORTINA D'AMPEZZO, 246 - 00135 ROMA

ADYTON

ARCHITECTURE  
&  
ENGINEERING